

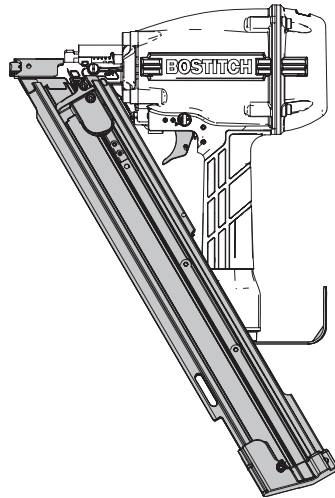
Our associates will ensure the tool works properly before you leave the store. If you experience issues with the tool while completing your project, simply bring it back to the Tool Rental Center to get a replacement. If you purchase Damage Protection at the time of your rental, you are not responsible for repair costs for tools that break due to normal use.



BOSTITCH®

BTF83PT, BTF83PL, BTF83WW

PNEUMATIC STICK NAILERS



OPERATION and MAINTENANCE MANUAL

⚠ WARNING:

⚠ ADVERTENCIA:

⚠ AVERTISSEMENT :

BEFORE OPERATING THIS TOOL, ALL OPERATORS SHOULD STUDY THIS MANUAL TO UNDERSTAND AND FOLLOW THE SAFETY WARNINGS AND INSTRUCTIONS. KEEP THESE INSTRUCTIONS WITH THE TOOL FOR FUTURE REFERENCE. IF YOU HAVE ANY QUESTIONS, CONTACT YOUR BOSTITCH REPRESENTATIVE OR DISTRIBUTOR.

BOSTITCH®

INTRODUCTION

BOSTITCH tools are precision-built tools, designed for precise, high volume nailing. These tools will deliver efficient, dependable service when used correctly and with care. As with any fine power tool, for best performance the manufacturer's instructions must be followed. Please study this manual before operating the tool and understand the safety warnings and cautions. The instructions on installation, operation and maintenance should be read carefully, and the manual kept for reference. **NOTE:** Additional safety measures may be required because of your particular application of the tool. Contact your BOSTITCH representative or distributor with any questions concerning the tool and its use. BOSTITCH, 701 E. Joppa Road, Towson, Maryland 21286, U.S. & Canada Only, É.-U. et Canada seulement

INDEX

Safety Instructions	3-4
Tool/Fastener Specifications	4-5
Operating Modes	5-6
Air Supply, Connections.....	6-7
Lubrication	7
Loading the Tool,	7-8
Fastener Depth Control Adjustment	8
Removing Nails	9
Tool Operation	9-11
Maintaining the Pneumatic Tool	11
Trouble Shooting	11-12

NOTE:

BOSTITCH tools have been engineered to provide excellent customer satisfaction and are designed to achieve maximum performance when used with precision BOSTITCH fasteners engineered to the same exacting standards. The BTF83PT is designed for use with 30° paper collated stick nails. The BTF83PL is designed for use with 21° plastic collated stick nails. The BTF83WW is designed for use with 28° wire collated stick nails. **BOSTITCH cannot assume responsibility for product performance if our tools are used with fasteners or accessories not meeting the specific requirements established for genuine BOSTITCH nails, staples and accessories.**



LIMITED WARRANTY – U.S. AND CANADA ONLY

BOSTITCH Fastening Systems "BOSTITCH" warrants to the original retail purchaser that the product purchased is free from defects in material and workmanship, and agrees to repair or replace, at BOSTITCH's option, any defective BOSTITCH branded pneumatic stapler or nailer for a period of seven (7) years from date of purchase (one (1) year from the date of purchase for compressors and tools used in production applications). Warranty is not transferable. Proof of purchase date required. This warranty covers only damage resulting from defects in material or workmanship; it does not cover conditions or malfunctions resulting from normal wear, neglect, abuse, accident or repairs attempted or made by other than our national repair center or authorized warranty service centers. Driver blades, bumpers, o-rings, pistons and piston rings are considered normally wearing parts. For optimal performance of your BOSTITCH tool always use genuine BOSTITCH fasteners and replacement parts.

THIS WARRANTY IS IN LIEU OF ALL OTHER WARRANTIES, EXPRESS OR IMPLIED, INCLUDING BUT NOT LIMITED TO THE IMPLIED WARRANTIES OF MERCHANTABILITY OR FITNESS FOR A PARTICULAR PURPOSE. BOSTITCH SHALL NOT BE LIABLE FOR ANY INCIDENTAL OR CONSEQUENTIAL DAMAGES.

Some states and countries do not allow limitations on how long an implied warranty lasts, or the exclusion or limitation of incidental or consequential damages, so the above limitations or exclusions may not apply to you. This warranty gives you specific legal rights, and you may also have other rights which vary from state to state and country to country.

To obtain warranty service in the U.S. return the product, together with proof of purchase, to the U.S. BOSTITCH National or Regional Independent Authorized Warranty Service Center. In the U.S. you may call us at 1-800-556-6696 or visit www.BOSTITCH.com for the location most convenient for you. In Canada please call us at 1-800-567-7705 or visit www.BOSTITCH.com

SAFETY INSTRUCTIONS

⚠WARNING: **EYE PROTECTION** which conforms to ANSI specifications and provides protection against flying particles both from the **FRONT** and **SIDE** should **ALWAYS** be worn by the operator and others in the work area when connecting to air supply, loading, operating or servicing this tool. Eye protection is required to guard against flying fasteners and debris, which could cause severe eye injury.



The employer and/or user must ensure that proper eye protection is worn. Eye protection equipment must conform to the requirements of the American National Standards Institute, ANSI Z87.1/CAN/CSA Z94.3 and provide both frontal and side protection. **NOTE:** Non-side shielded spectacles and face shields alone do not provide adequate protection.



Additional Safety Protection will be required in some environments. For example, the working area may include exposure to noise level which can lead to hearing damage. The employer and user must ensure that any necessary hearing protection is provided and used by the operator and others in the work area. Some environments will require the use of head protection equipment. When required, the employer and user must ensure that head protection conforming to ANSI CAN/CSA Z89.1 is used.

Some dust created by power sanding, sawing, grinding, drilling, and other construction activities contains chemicals known to the State of California to cause cancer, birth defects or other reproductive harm. Some examples of these chemicals are:

- lead from lead-based paints
- crystalline silica from bricks and cement and other masonry products
- arsenic and chromium from chemically-treated lumber

⚠WARNING: Your risk from these exposures varies, depending on how often you do this type of work. To reduce your exposure to these chemicals: work in a well ventilated area, and work with approved safety equipment, such as those dust masks that are specially designed to filter out microscopic particles.

AIR SUPPLY AND CONNECTIONS

⚠WARNING: Do not use oxygen, combustible gases, or bottled gases as a power source for this tool as tool may explode, possibly causing injury.

⚠WARNING: Use only clean, dry, regulated air. Condensation from an air compressor can rust and damage the internal workings of the tool.

⚠WARNING: Do not use supply sources which can potentially exceed 200 p.s.i.g. (14 kg/cm²) as tool may burst, possibly causing injury.

⚠WARNING: The connector on the tool must not hold pressure when air supply is disconnected. If a wrong fitting is used, the tool can remain charged with air after disconnecting and thus will be able to drive a fastener even after the air line is disconnected possibly causing injury.

⚠WARNING: Do not pull trigger or depress contact arm while connected to the air supply as the tool may cycle, possibly causing injury.

⚠WARNING: Always disconnect air supply: 1.) Before making adjustments; 2.) When servicing the tool; 3.) When clearing a jam; 4.) When tool is not in use; 5.) When moving to a different work area, as accidental actuation may occur, possibly causing injury.

LOADING TOOL

⚠WARNING: When loading tool: 1.) Never place a hand or any part of body in fastener discharge area of tool; 2.) Never point tool at anyone; 3.) Do not pull the trigger or depress the trip as accidental actuation may occur, possibly causing injury.

⚠WARNING: Connect tool to air supply before loading fasteners, to prevent a fastener from being fired during connection. The tool driving mechanism may cycle when tool is connected to the air supply. Do not load fasteners with trigger or contact trip depressed, to prevent unintentional firing of a fastener.

OPERATION

⚠WARNING: Always handle the tool with care: 1.) Never engage in horseplay; 2.) Never pull the trigger unless nose is directed toward the work; 3.) Keep others a safe distance from the tool while tool is in operation 4.) Always assume that the tool contains fasteners as accidental actuation may occur, possibly causing injury.

⚠WARNING: The operator must not hold the trigger pulled on contact arm tools except during fastening operation as serious injury could result if the trip accidentally contacted someone or something, causing the tool to cycle.

⚠WARNING: Keep hands and body away from the discharge area of the tool. A contact arm tool may bounce from the recoil of driving a fastener and an unwanted second fastener may be driven possibly causing injury.

⚠WARNING: Do not remove, tamper with, or otherwise cause the tool, trigger, or contact trip to become inoperable. Do not tape or tie trigger or contact trip in the on position. Do not remove spring from contact trip. Make daily inspections for free movement of trigger and contact trip. Uncontrolled discharge could result.

⚠WARNING: Do not alter or modify the tool in any way.

⚠WARNING: Make sure hose is free of obstructions or snags. Entangled or snarled hoses can cause loss of balance or footing. Do not lift, pull or lower tool by the hose.

⚠WARNING: Use the tool only for its intended use. Do not discharge fasteners into open air, concrete, stone, extremely hard woods, knots or any material too hard for the fastener to penetrate. Do not use the body of the tool or top cap as a hammer. Discharged fasteners may follow unexpected path and cause injury.

⚠WARNING: Always operate the tool in a clean, lighted area. Be sure the work surface is clear of any debris and be careful not to lose footing when working in elevated environments such as rooftops.

⚠WARNING: Grip tool firmly to maintain control while allowing tool to recoil away from work surface as fastener is driven. In "Contact Actuation Mode" if contact trip is allowed to recontact work surface before trigger is released an unwanted fastener will be fired.

⚠WARNING: Check operation of the contact arm mechanism frequently. Do not use the tool if the arm is not working correctly as accidental driving of a fastener may result. Do not interfere with the proper operation of the contact arm mechanism.

⚠WARNING: Do not drive fasteners on top of other fasteners or with the tool at an overly steep angle as this may cause deflection of fasteners which could cause injury.

⚠WARNING: Do not drive fasteners close to the edge of the work piece as the wood may split, allowing the fastener to be deflected possibly causing injury.

⚠WARNING: This nailer produces SPARKS during operation. NEVER use the nailer near flammable substances, gases or vapors including lacquer, paint, thinner, gasoline, adhesives, mastics, glues or any other material that is -- or the vapors, fumes or byproducts of which are -- flammable, combustible or explosive. Using the nailer in any such environment could cause an EXPLOSION resulting in personal injury or death to user and bystanders.

⚠WARNING: Never use rafter hook to hang tool from body, clothing or belt.

⚠WARNING: Always verify and be aware of tool operating mode by inspecting the trigger before connecting to an air supply and/or using the tool.

MAINTAINING THE TOOL

⚠WARNING: When working on air tools note the warnings in this manual and use extra care when evaluating problem tools.

TOOL SPECIFICATIONS

All screws and nuts are metric.

MODEL	TOOL ACTUATION	LENGTH	HEIGHT	WIDTH	WEIGHT
BTF83WW	Selectable sequential / contact trip	20 1/2" (521 mm)	12-3/4" (324 mm)	5-3/4" (146 mm)	7.9 lb (3.58 kg)
BTF83PT	Selectable sequential / contact trip	19 3/4" (501 mm)	12-3/4" (324 mm)	5-3/4" (146 mm)	7.8 lb (3.54 kg)
BTF83PL	Selectable sequential / contact trip	21 1/2" (547 mm)	12-1/2" (324 mm)	5" (127 mm)	7.7 lb (3.49 kg)

FASTENER SPECIFICATIONS:

BTF83PT

Uses 30° paper collated notched head or offset round head stick nails, in lengths of 2" to 3-1/4" (50-83 mm) and shank diameters of .113" to .131" (2.8 - 3.3 mm)

BTF83PL

Uses 21° plastic collated notched head or offset round head stick nails, in lengths of 2" to 3-1/4" (50-83 mm) and shank diameters of .113" to .148" (2.8 - 3.3 mm)

BTF83WW

Uses 28° wire collated notched head or offset round head stick nails, in lengths of 2" to 3-1/4" (50-83 mm) and shank diameters of .113" to .131" (2.8 - 3.3 mm)

TOOL AIR FITTING:

This tool uses a 3/8" N.P.T. male plug. The fitting must be capable of discharging tool air pressure when disconnected from the air supply.

OPERATING PRESSURE:

70 to 120 p.s.i.g. (4.9 to 8.4 kg/cm²). Select the operating pressure within this range for best fastener performance.

⚠WARNING: DO NOT EXCEED THIS RECOMMENDED OPERATING PRESSURE.

AIR CONSUMPTION:

These nailers require 6.4 cubic feet per minute (181 liters per minute) of free air to operate in sequential trip mode at the rate of 100 nails per minute, at 80 p.s.i.g (5.6 kg/cm²). Take the actual rate at which the tool will be run to determine the amount of air required. For instance, if your fastener usage averages 50 nails per minute, you need 50% of the 6.4 c.f.m. (181 liters per minute) which is required to operate the tool at 100 nails per minute.

OPERATING MODES

BOSTITCH OFFERS TWO MODES OF OPERATION FOR THIS TOOL.

SEQUENTIAL TRIP:

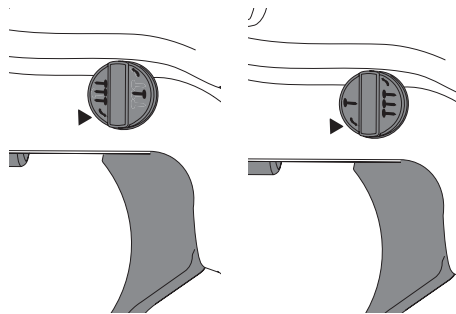
The Sequential Trip requires the operator to hold the tool against the work surface before pulling the trigger. This makes accurate fastener placement easier, for instance on framing, toe nailing and crating applications. The Sequential Trip allows exact fastener placement without the possibility of driving a second fastener on recoil, as described under "Contact Trip". The Sequential Trip Tool has a positive safety advantage because it will not accidentally drive a second fastener if the tool is contacted against the work – or anything else – while the operator is holding the trigger pulled.

CONTACT TRIP:

The common operating procedure on "Contact Trip" tools is for the operator to contact the work surface to actuate the trip mechanism while keeping the trigger pulled, thus driving a fastener each time the work is contacted. This will allow rapid fastener placement on many jobs, such as sheathing, decking and pallet assembly. All pneumatic tools are subject to recoil when driving fasteners. The tool may bounce, releasing the trip, and if unintentionally allowed to re-contact the work surface with the trigger still actuated (finger still holding trigger pulled) an unwanted second fastener will be driven.

MODE IDENTIFICATION:

Refer to Tool Operation Instructions on pages 9-11 before proceeding to use this tool.



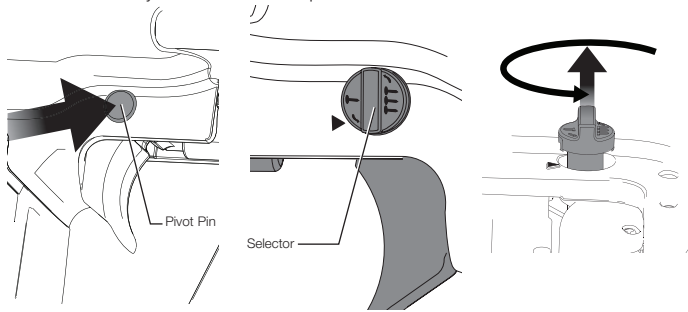
TO CHANGE OPERATING MODES:

⚠WARNING: Disconnect air line from tool and remove fasteners from magazine before making adjustments or personal injury may result.

⚠WARNING: Always know the tool operating mode before connecting to an air supply and/or using the tool.

SEQUENTIAL TRIP - ↺

1. Push and hold in pivot pin opposite the selector, while rotating the selector 180° counterclockwise to the sequential trip position ↺.
2. Ensure the selector is fully seated in the new position.



To operate the nailer in sequential trip mode:

1. Depress the contact trip firmly against the work surface.
2. Depress the trigger.

⚠WARNING: A nail will fire each time the trigger is depressed as long as the contact trip remains depressed.

CONTACT TRIP - ↻

1. Push and hold in pivot pin while rotating the selector 180° clockwise to the contact trip position ↻.
2. Ensure the selector is fully seated in the new position.

To operate the nailer in contact trip mode:

1. Depress the trigger.
2. Push the contact trip against the work surface. As long as the trigger is depressed, the tool will fire a nail every time the contact trip is depressed. This allows the user to drive multiple nails in sequence.

⚠WARNING: Do not keep trigger depressed when tool is not in use.

AIR SUPPLY AND CONNECTIONS

⚠WARNING: Do not use oxygen, combustible gases, or bottled gases as a power source for this tool as tool may explode, possibly causing injury.

⚠WARNING: Do not connect tool to any air supply which could potentially exceed 200 p.s.i.g. (14 kg/ cm²).

FITTINGS:

Install a male plug on the tool which is free flowing and which will release air pressure from the tool when disconnected from the supply source.

HOSES:

Air hoses should have a minimum of 150 p.s.i. (10.5 kg/cm²) working pressure rating or 150 percent of the maximum pressure that could be produced in the air system. The supply hose should contain a fitting that will provide "quick disconnecting" from the male plug on the tool.

SUPPLY SOURCE:

Use only clean regulated compressed air as a power source for this tool. **NEVER USE OXYGEN, COMBUSTIBLE GASES, OR BOTTLED GASES, AS A POWER SOURCE FOR THIS TOOL AS TOOL MAY EXPLODE.**

REGULATOR:

A pressure regulator with an operating pressure of 0 - 125 p.s.i.g. (0 - 8.79 kg/cm²) is required to control the operating pressure for safe operation of this tool. Do not connect this tool to air pressure which can potentially exceed 200 p.s.i. (14 kg/cm²) as tool may fracture or burst, possibly causing injury.

OPERATING PRESSURE:

Do not exceed recommended maximum operating pressure as tool wear will be greatly increased. The air supply must be capable of maintaining the operating pressure at the tool. Pressure drops in the air supply can reduce the tool's driving power. Refer to "Tool Specifications" for setting the correct operating pressure for the tool.

FILTER:

An in-line filter will help to get the best performance and minimum wear from the tool. The filter must have adequate flow capacity for the specific installation. The filter has to be kept clean to be effective in providing clean compressed air to the tool. Consult the manufacturer's instructions on proper maintenance of your filter. A dirty and clogged filter will cause a pressure drop which will reduce the tool's performance.

LUBRICATION

Frequent, but not excessive, lubrication is required for best performance. Use BOSTITCH Air Tool Lubricant, PREMOIL, or equivalent. Do not use detergent oil or additives as these lubricants will cause accelerated wear to the seals and bumpers in the tool, resulting in poor tool performance and frequent tool maintenance. Only a few drops of oil at a time is necessary. Too much oil will only collect inside the tool and will be noticeable in the exhaust cycle.

COLD WEATHER OPERATION:

For cold weather operation, near and below freezing, the moisture in the air line may freeze and prevent tool operation. We recommend the use of BOSTITCH winter formula air tool lubricant, WINTEROIL, or permanent antifreeze (ethylene glycol) as a cold weather lubricant.

NOTICE: Do not store tools in a cold weather environment to prevent frost or ice formation on the tools operating valves and mechanisms that could cause tool failure.

NOTICE: Some commercial air line drying liquids are harmful to "O"-rings and seals – do not use these low temperature air dryers without checking compatibility.

LOADING THE TOOL

▲WARNING:



EYE PROTECTION which conforms to ANSI specifications and provides protection against flying particles both from the FRONT and SIDE should ALWAYS be worn by the operator and others in the work area when loading, operating or servicing this tool. Eye protection is required to guard against flying fasteners and debris, which could cause severe eye injury.

The employer and/or user must ensure that proper eye protection is worn. Eye protection equipment must conform to the requirements of the American National Standards Institute, ANSI Z87.1 and provide both frontal and side protection. **NOTE: Non-side shielded spectacles and face shields alone do not provide adequate protection.**

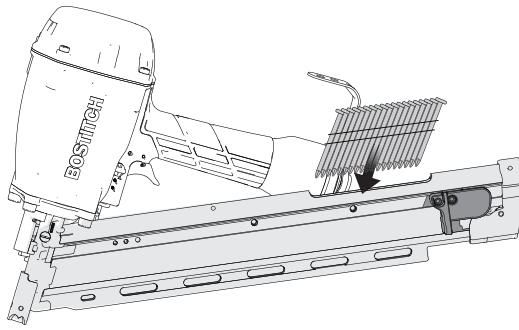
▲WARNING:

TO PREVENT ACCIDENTAL INJURIES:

- Connect tool to air supply before loading fasteners to prevent a fastener from being fired when connecting
- Never place a hand or any other part of the body in nail discharge area of tool while the air supply is connected.
- Never point the tool at anyone else.
- Never engage in horseplay.
- Never pull the trigger unless nose is directed at the work.
- Always handle the tool with care.
- Do not pull the trigger or depress the trip mechanism while loading the tool.

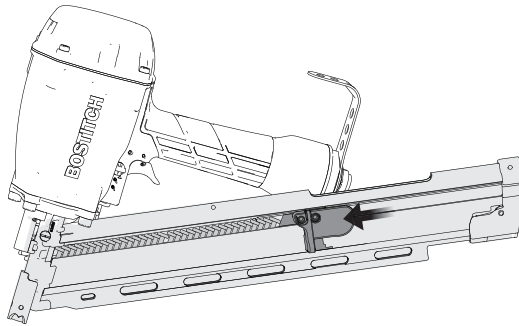
1. Slide pusher to the base of the magazine to lock it in place.
2. Hold the nailer with the magazine facing downward and insert the appropriate collated nail sticks into the back of the magazine.

NOTE: See "Tool Specifications" to determine appropriate nail sizes and angles.



3. Pull pusher back again to release and carefully allow pusher to slide forward until it makes contact with the nails.

NOTE: Use only nails recommended for use in BOSTITCH Framing nailers or nails which meet the BOSTITCH specifications.



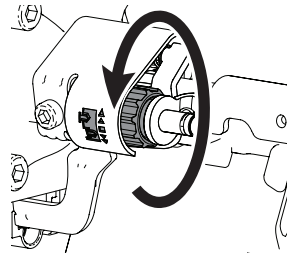
FASTENER DEPTH CONTROL ADJUSTMENT

The Fastener Depth Control Adjustment feature provides control of the nail drive depth from flush with or just above the work surface to shallow or deep countersink.

TO ADJUST THE FASTENER DEPTH CONTROL:

⚠WARNING: Disconnect tool from air supply before attempting any parts disassembly and before changing the work contact element adjustment.

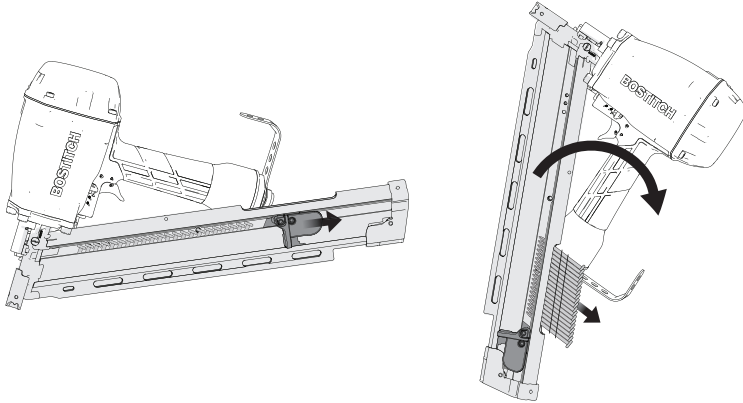
Rotate depth control wheel to give the desired depth of drive.



NOTE: Rotate depth control wheel to give the desired depth of drive.

REMOVING NAILS

1. Slide pusher to base of the magazine to lock it in place.
2. Tilt the tool and slide the nails to the back of the magazine.
3. Slide the nails out of the magazine.



TOOL OPERATION

⚠WARNING: **EYE PROTECTION** which conforms to ANSI specifications and provides protection against flying particles both from the **FRONT** and **SIDE** should **ALWAYS** be worn by the operator and others in the work area when connecting to air supply, loading, operating or servicing this tool. Eye protection is required to guard against flying fasteners and debris, which could cause severe eye injury.



The employer and/or user must ensure that proper eye protection is worn. Eye protection equipment must conform to the requirements of the American National Standards Institute, ANSI Z87.1/CAN/CSA Z94.3 and provide both frontal and side protection. **NOTE:** Non-side shielded spectacles and face shields alone do not provide adequate protection.

BEFORE HANDLING OR OPERATING THIS TOOL:

- I. **READ AND UNDERSTAND THE WARNINGS CONTAINED IN THIS MANUAL.**
- II. **REFER TO "TOOL SPECIFICATIONS" IN THIS MANUAL TO IDENTIFY THE OPERATING SYSTEM ON YOUR TOOL.**

There are two available operation modes on these BOSTITCH pneumatic tools. They are:

1. **SEQUENTIAL TRIP OPERATION**
2. **CONTACT TRIP OPERATION**

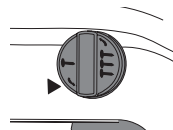
BOSTITCH offers two types of operating modes which function differently: Sequential Trip and Contact Trip. Each mode has specific advantages. You should evaluate your particular construction project to determine which mode is best.

⚠WARNING: Always verify and be aware of tool operating mode by inspecting the trigger before connecting to an air supply and/or using the tool.

1. SEQUENTIAL TRIP OPERATION:

The Sequential Trip (Mode) gets its name from the "sequence" required to drive a fastener. To drive a fastener, the operator must first depress the "trip" FULLY against the work surface and then pull the trigger. To drive a second nail, the operator must lift the tool from the work surface, release the trigger and then repeat the above sequence.

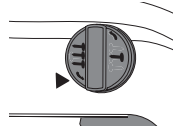
- A. **The Sequential Trip (Mode):** offers a positive safety advantage since it will not accidentally drive a fastener if the tool is bumped against any surface or anybody while the operator is holding the tools with the trigger pulled.
- B. **The Sequential Trip (Mode):** allows "place nailing" without the possibility of driving a second, unwanted fastener on recoil as described below under "Contact Trip".



2. CONTACT TRIP OPERATION:

Your new BOSTITCH tool can be configured for use in Contact Trip “Conventional trip” mode. To drive a nail, the “trip” and the trigger must both be depressed. In conventional Contact Trip tools, the trigger may be depressed and held, and each “contact” between the trip and the work surface will drive a nail.

- A. **SINGLE FASTENER PLACEMENT (Place Nailing)** – First position the “trip” FULLY on the work surface, WITHOUT PULLING THE TRIGGER. Depress the “trip” FULLY until the nose of the tool touches the work surface and then pull the trigger to drive a nail. Do not press the tool against the work surface with extra force. Instead, allow the tool to recoil off the work surface to avoid a second unwanted fastener. Note: remove your finger from the trigger after each operation.



- B. **RAPID FIRE OPERATION (“Bump” Nailing)** – First, hold the tool with the “trip” pointing towards but not touching the work surface. Pull the trigger and then tap or “bump” the trip against the work surface using a bouncing motion. Each depression of the “trip” will cause a nail to be driven.

▲WARNING: The Contact Trip will not prevent a nail from being accidentally driven if the trigger is depressed and the “trip” is bumped against any object or person. Never hold or carry the tool with your finger on the trigger. Only depress and hold trigger when you intend to rapidly drive multiple nails and the tool is pointed at the work surface.

▲WARNING: When using conventional Contact Trip for Place Nailing, the tool may bounce due to recoil, and if the tool is allowed to re-contact the work surface while you are holding the trigger pulled, a second unwanted nail will be driven. You should allow the tool to recoil far enough to release the trip and avoid a second cycle. Don’t push the tool down extra hard; let the tool do the work.

▲WARNING: The operator must not hold the trigger pulled on contact trip tools except during fastening operation, as serious injury could result if the trip accidentally contacted someone or something, causing the tool to cycle.

▲WARNING: Keep hands and body away from the discharge area of the tool. A contact trip tool may bounce from the recoil of driving a fastener and an unwanted second fastener may be driven, possibly causing injury.

▲WARNING: Never use rafter hook to hang tool from body, clothing or belt.

TOOL OPERATION CHECK:

▲CAUTION: Remove all fasteners from tool before performing tool operation check.

SEQUENTIAL TRIP OPERATION:

- A. Press the contact trip against the work surface, without touching the trigger.
THE TOOL MUST NOT CYCLE.
- B. Hold the tool off the work surface and pull the trigger.
THE TOOL MUST NOT CYCLE.
Release the trigger. The trigger must return to the trigger stop on the frame.
- C. Pull the trigger and press the contact trip against the work surface.
THE TOOL MUST NOT CYCLE.
- D. With finger off the trigger, press the contact trip against the work surface. Pull the trigger.
THE TOOL MUST CYCLE.

2. CONTACT TRIP OPERATION:

- A. With finger off the trigger, press the contact trip against the work surface.
THE TOOL MUST NOT CYCLE.
- B. Hold the tool off the work surface, and pull the trigger.
THE TOOL MUST NOT CYCLE.
- C. With the tool off the work surface, pull the trigger. Press the contact trip against the work surface.
THE TOOL MUST CYCLE.
- D. Without touching the trigger, press the contact trip against the work surface, then pull the trigger.
THE TOOL MUST CYCLE.

IN ADDITION TO THE OTHER WARNINGS CONTAINED IN THIS MANUAL OBSERVE THE FOLLOWING FOR SAFE OPERATION

- Use the BOSTITCH pneumatic tool only for the purpose for which it was designed.
- Never use this tool in a manner that could cause a fastener to be directed toward the user or others in the work area.
- Do not use the tool as a hammer.
- Always carry the tool by the handle. Never carry the tool by the air hose.

- Do not alter or modify this tool from the original design or function without approval from BOSTITCH.
- Always be aware that misuse and improper handling of this tool can cause injury to yourself and others.
- Never clamp or tape the trigger or contact trip in an actuated position.
- Never leave a tool unattended with the air hose attached.
- Do not operate this tool if it does not contain a legible WARNING LABEL.
- Do not continue to use a tool that leaks air or does not function properly. Notify your nearest BOSTITCH representative if your tool continues to experience functional problems.

MAINTAINING THE PNEUMATIC TOOL

⚠WARNING: When working on air tools, note the warnings in this manual and use extra care evaluating problem tools.

⚠CAUTION: Pusher spring (constant force spring). Caution must be used when working with the spring assembly. The spring is wrapped around, but not attached to, a roller. If the spring is extended beyond its length, the end will come off the roller and the spring will roll up with a snap, with a chance of pinching your hand. Also the edges of the spring are very thin and could cut. Care must also be taken to insure no permanent kinks are put in the spring as this will reduce the springs force.

REPLACEMENT PARTS:

Use only Genuine OEM replacement parts.

ASSEMBLY PROCEDURE FOR SEALS:

When repairing a tool, make sure the internal parts are clean and lubricated. Use Parker "O"-LUBE or equivalent on all "O"-rings. Coat each "O"-ring with "O"-LUBE before assembling. Use a small amount of oil on all moving surfaces and pivots. After reassembly add a few drops of BOSTITCH Air Tool Lubricant through the air line fitting before testing.

AIR SUPPLY-PRESSURE AND VOLUME:

Air volume is as important as air pressure. The air volume supplied to the tool may be inadequate because of undersize fittings and hoses, or from the effects of dirt and water in the system. Restricted air flow will prevent the tool from receiving an adequate volume of air, even though the pressure reading is high. The results will be slow operation, misfeeds or reduced driving power. Before evaluating tool problems for these symptoms, trace the air supply from the tool to the supply source for restrictive connectors, swivel fittings, low points containing water and anything else that would prevent full volume flow of air to the tool.

TROUBLE SHOOTING

⚠WARNING: To reduce the risk of serious personal injury, remove fasteners from magazine before making any adjustments or servicing this tool.

SYMPTOM	CAUSE	FIX
Trigger valve housing leaks	O-ring or valve stem failure	Replace valve using Trigger Valve Kit
Top cap leaks air	Loose cap screws	Tighten cap screws using appropriate hex wrench
	Damaged or worn gasket or o-ring	Replace gasket/o-rings using Nailer O-Ring Repair Kit
Exhaust leaks	Main seal or o-ring damaged, debris in tool.	Replace gasket/o-rings using Framing Nailer O-Ring Repair Kit
Air leaks around nose when tool is at rest. (Driver blade in up position.)	Damaged or worn o-rings	Replace gasket/o-rings using Framing Nailer O-Ring Repair Kit
Air leaks around nose when tool is in actuated position. (Driver blade in down position.)	Damaged or worn bumper	Replace bumper using: Frame Nailer Bumper Kit
Tool does not cycle in cold weather	Tool not receiving air	Check air supply
	Valve may be frozen	Warm up tool. Lubricate with BOSTITCH Pneumatic Tool Oil or winter weight pneumatic oil containing ethylene glycol
	Damaged or worn o-rings	Replace gasket/o-rings using Framing Nailer O-Ring Repair Kit
	Broken or damaged driver blade	Replace driver blade

⚠WARNING: To reduce the risk of serious personal injury, remove fasteners from magazine before making any adjustments or servicing this tool.

SYMPTOM	CAUSE	FIX
Lack of power; sluggish	Low air pressure	Check air supply
	Lack of lubrication	Lubricate tool using BOSTITCH pneumatic tool oil
	Damaged or worn o-rings	Replace gasket/o-rings using framing nailer o-ring repair kit
	Exhaust port blocked or clogged	Disconnect air, remove exhaust plate from top of tool, clean port
	Depth adjustment set too shallowly	Reset depth adjustment
	Driver damaged or worn	Replace driver blade
Skipping nails; intermittent feed	Air restricted	Check air supply and couplers
	Lack of lubrication	Lubricate tool using BOSTITCH pneumatic tool oil
	Nosepiece screws loose	Tighten nosepiece screws using appropriate hex wrench
	Wrong size/angle fasteners	Use only recommended fasteners
	Dirty magazine	Clean magazine track and nosepiece
	Damaged/Worn magazine	Replace magazine
	Broken or damaged driver blade	Replace driver blade
	Trigger valve o-ring worn or damaged	Replace valve using Trigger Valve Kit
	Worn piston o-ring	Replace O-ring using Framing Nailer O-Ring Repair Kit
	Worn or damaged pusher spring	Replace spring using Magazine Pusher Spring Kit
Fasteners jam in tool	Driver channel in nosepiece worn	Replace nosepiece
	Wrong size/ angle fasteners	Use only recommended fasteners
	Worn driver blade	Replace driver blade
	Nosepiece screws loose	Tighten nosepiece screws using appropriate hex wrench
	Nails not feeding properly	Ensure nails are feeding properly through the magazine and into the nose